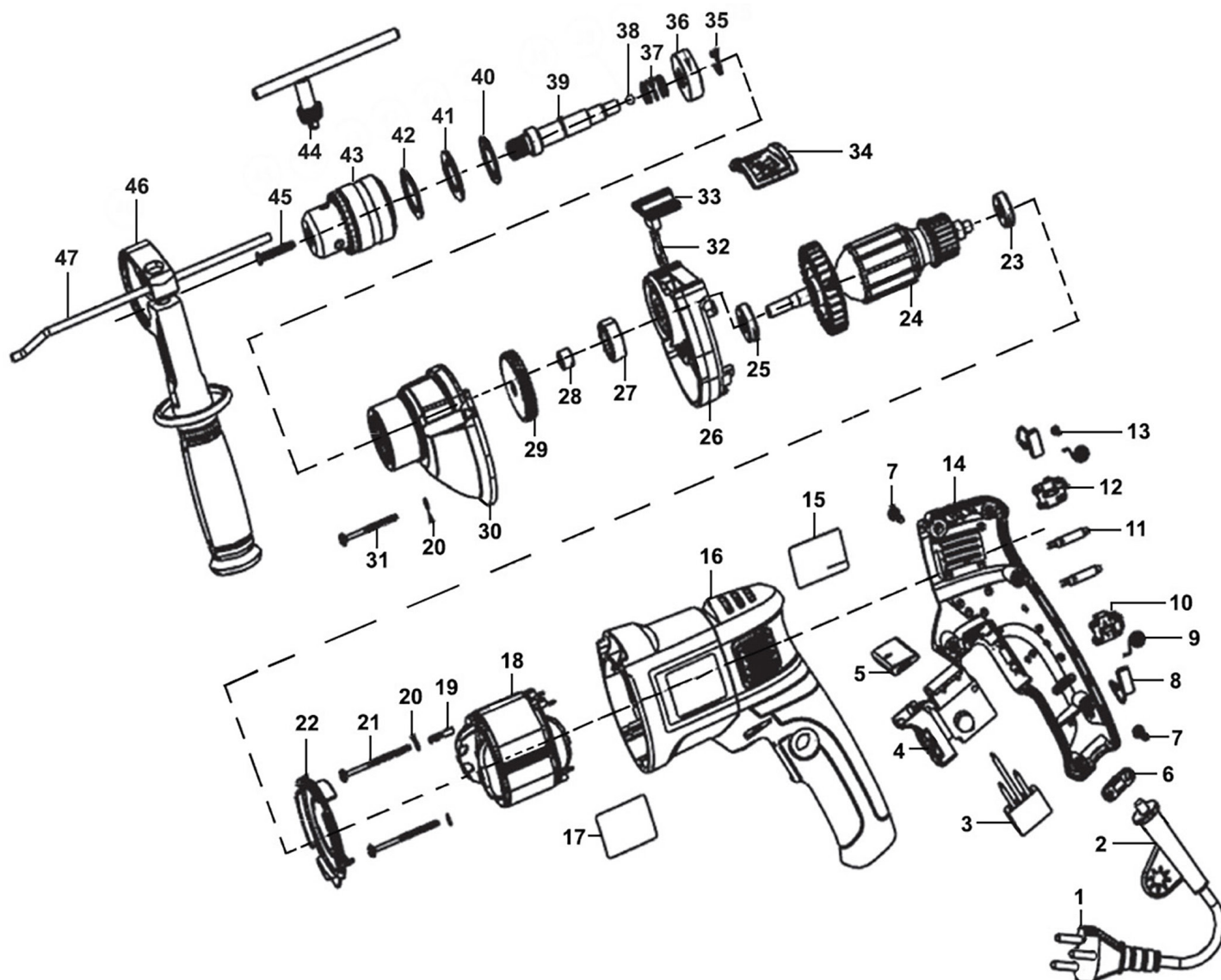


Parts Information: 13mm Variable Speed Hammer Drill with Reverse 850W/230V Model No: SD800.V3



Item	Part No.	Description
1	SD1000.V3-01	Cable
2	SD1000.V3-02	Cable Grommet
3	SD1000.V3-04	Capacitor
4	SD1000.V3-05	Switch Press Button (c/w Safety Lock & Speed Control)
5	SD1000.V3-06	Reverse/Forward Lever for Switch
6	SD1000.V3-03	Cable Clip
7	SD1000.V3-07	Tapping Screw ST4 x 16mm
8	SD1000.V3-09	Carbon Brush (Single) (17 x 10.4 x 5.4 x 40.4mm)

Item	Part No.	Description
9	SD1000.V3-13	Coil Spring
10	SD1000.V3-10	Lower Brush Holder
11	SD1000.V3-11	Inductor
12	SD1000.V3-12	Upper Brush Holder
13	SD800.V3-13	Tapping Screw ST3 x 8mm
14	SD800.V3-14	Right Handle
15	SD800.V3-15	Label, Right
16	SD1000.V3-16	Housing

NOTE: It is our policy to continually improve products and as such we reserve the right to alter data, specifications and component parts without prior notice. There may be alternative versions of this product, please contact us should you require this information.

IMPORTANT: No liability is accepted for incorrect use of product. Spare parts must be fitted by a competent person

WARRANTY: Guarantee is 12 months from purchase date, proof of which will be required for any claim.

Jack Sealey Ltd t/a Sealey Group, Kempson Way, Suffolk Business Park, Bury St Edmunds, Suffolk, IP32 7AR UK

Jack Sealey (EU) Ltd t/a Sealey Group, Farney Street, Carrickmacross, Co. Monaghan, A81 PK68 Ireland

Tel: 01284 757500 • Email: sales@sealey.co.uk • Web: www.sealey.co.uk



TM

Parts Information:
**13mm Variable Speed Hammer Drill with
Reverse 850W/230V
Model No: SD800.V3**

Item	Part No.	Description
17	SD800.V3-17	Label, Left
18	SD800.V3-18	Stator
19	SD1000.V3-19	Waveform Buckle
20	SD1000.V3-20	Plain Washer M4
21	SD800.V3-21	Rd Head S/T Screw M4 x 65mm Black
22	SD1000.V3-22	Fan Guide
23	B/627	Bearing 627
24	SD800.V3-24	Rotor 165mm
25	B/609Z	Bearing 609Z
26	SD800.V3-26	Supporter
27	SD800.V3-27	Calm Impact Tooth
28	B/HK0810	Needle Bearing HK0810
29	SD800.V3-29	Gear
30	SD800.V3-30	Gear Box
31	SD1000.V3-37	Rd Head S/T Screw M4 x 45mm Black
32	SD1000.V3-46	Shifting Block

Item	Part No.	Description
33	SD800.V3-33	Push Button
34	SD1000.V3-48	Push Button Seat
35	CRM251.12	External Circlip 13.7mm ID.
36	B/6201	Bearing 6201
37	SD800.V3-37	Spring Ø14.5mm
38	SB-5.0	Steel Ball 5mm
39	SD800.V3-39	Output Spindle
40	SD800.V3-40	Circlip Ø32mm
41	SD800.V3-41	Seal ring
42	SM35CE.V4-137	Internal Circlip Ø37.8mm
43	SD1000.V3-58	Chuck 1.5-13mm - 1/2" x 20 unf
44	SM2503.DCK	Drill Chuck Key
45	SD800.V3-45	Left Hand Thread Chuck Screw M5 x 25mm Black
46	SD800.V3-46	Side Handle
47	SD1000.V3-62	Scale

NOTE: It is our policy to continually improve products and as such we reserve the right to alter data, specifications and component parts without prior notice. There may be alternative versions of this product, please contact us should you require this information.

IMPORTANT: No liability is accepted for incorrect use of product. Spare parts must be fitted by a competent person

WARRANTY: Guarantee is 12 months from purchase date, proof of which will be required for any claim.

Jack Sealey Ltd t/a Sealey Group, Kempson Way, Suffolk Business Park, Bury St Edmunds, Suffolk, IP32 7AR UK

Jack Sealey (EU) Ltd t/a Sealey Group, Farney Street, Carrickmacross, Co. Monaghan, A81 PK68 Ireland

Tel: 01284 757500 • **Email:** sales@sealey.co.uk • **Web:** www.sealey.co.uk